

Mendrend - Patent No. 2372253 / Uses Stain/Efflorescence Obliteration Example 1: Comrend W.P. Spatter Finish

The building below had been faced in Comrend W.P. spatter finish. Two to three months after application a fault developed in the window cill, making it necessary to replace both the cill and the window frame. During the course of repairing the Comrend inclement weather conditions created white staining of the repaired area.



Area of window prior to the application of Mendrend

Water staining then further compounded the fault, which caused a darker area immediately below the window cill. Differences within the water content of the repair materials, compared to the original materials application, created an inevitable texture variation, which was highlighted by the colour discrepancies. The client was unhappy and the contractor was required to make further repairs.

The contractor was then faced with the traditional options of removing and reinstating the repair area, which was difficult due to the adhesion of the Comrend to the block work below or over coating an entire elevation (Approx 70M²), which was impractical due to throatings of window cills etc.

The practical answer was to apply MENDREND, by foam roller to the affected area, which was 'faded' into the surrounding material. Whilst this did not treat the differences in texture, these became aesthetically acceptable once the colour variations had had been treated.

The repair was undertaken quicker, with less fuss and cost, to the total satisfaction of the contractor and the praise of his client.



Area of window, after application of Mendrend

Product Data Sheet



Mendrend - Patent No. 2372253

DESCRIPTION

An aqueous dispersion of acrylic polymers, iron oxide pigments, finely graded aggregates, controlling chemicals, which eliminate colour variations through differing drying criteria. It is especially formulated to be absorbed into cement renders.

It is supplied in 3Kg or 15Kg plastic drums.

It is manufactured in a standard range of colours and may further be blended to specific colouration, subject to additional cost, if required.

APPLICATION – LOCALIZED REPAIR

It may be applied with 4" roller or spray.

The use of a 4" FOAM roller enables the speedy application for render finishes. The use of a 4" FOAM roller enables feathering in of repaired areas to adjacent render, the roller being emptied onto adjacent areas, with additional water added. The use of a 4" FOAM roller avoids brush marks.

A small quantity of water is added to the roller tray. The roller is loaded from the container then flattened on the tray, with small quantities of water added from the tray, to achieve optimum workability. Additional quantities of water are not detrimental to the product excepting that obliteration qualities are reduced.

A further second application, following initial set may be required to cover any areas previously omitted.

It is suggested that a small unobtrusive area of property is first treated to check colour match before proceeding with any major areas of repair.



APPLICATION – GENERAL OVER-COATING

PREPARATION

All surfaces to be painted should be clean, dry and free from loose and flaking materials. Repair cracking and defective areas paying particular attention to those that may lead to moisture penetration. Treat fungal or algal growth with Fungicidal Wash as directed. Ensure product is well mixed using a high speed drill and mixing paddle, before and during application.

APPLICATION

Ensure sufficient material is available to complete each elevation or area. Do not apply in temperatures below 5c or when rain is imminent. Do not apply in direct sunlight as this accelerates drying, which may leave a streaky finish. Apply by masonry roller, keeping the roller head fully loaded and apply a thin, even film whilst overlapping each stroke as necessary to produce a uniform texture. Maintain a working edge finishing only at design features, wall end etc. Use smaller 4” rollers for “cutting in” as using brushes can leave marks in the finish.

We recommend 9”+ extra long pile polyester microfibre roller heads for general over-coating as using roller heads made with woven polyester or acrylic can cause application issues. We also do not recommend using brushes for application as they leave a poor finish. Please contact us if you are unsure of correct product to use.

COVERAGE

Will cover approximately 1.5 m² per 1kg, this is depending on the nature and porosity of the surface being painted. In most cases one coat should be sufficient, apply a second coat only if required.

DRYING TIME

Touch Dry in 3 – 5 hours, through dry in 48 – 72 hours.

GENERAL INFORMATION

Thinner: Clean water

To avoid the risk of spillage, always store and transport in a secure upright position.

PAINT PRODUCT

Ensure good ventilation during application and drying.

Avoid contact with skin and eyes. In case of contact with eyes, rinse immediately with plenty of water and seek medical advice.

After contact with skin, wash immediately with plenty of soap and water or a recognised skin cleaner.

Keep out of reach of children.

Safely data sheet available or professional user on request.

Product Data Cont'd



Mend rend - Patent No. 2372253

USES

It may be used to cover areas of discolouration caused by efflorescence or site contamination.

Used in collaboration and conjunction with Mendrend Fissure Infill, to blend in areas of repair.

To obliterate graffiti, (alternative to anti-graffiti coatings).

To produce shading effects to finished render, to specified requirements.

COVERAGE

Depends upon the thickness of coat and nature of defect being remedied. I.e. 1 - 2 square metres per KG for overall obliterating coverage, greater coverage's for less obtrusive repair or shading requirements.

DRYING TIME

Two/three hours at 15-20C, relative humidity not exceeding 80%.

SHELF LIFE

More than eighteen months in sealed containers. Protect from frost.

CLEANING

Clean all equipment with hot water immediately after use.

HEALTH & SAFETY DATA

Materials are of a very low order of toxicity. However, in common with all acrylic based materials, always use in well-ventilated conditions. Remove skin contamination immediately using warm, clean water, irrigate eye splashes with copious quantities of water and seek medical attention if irritation persists.

Keep out of reach of children and avoid run off of spillage into land drains.

Absorb spillage with absorbent and dispose of by landfill non-special waste.



Mendrend Fissure Infill - Patent No. 2372253 / Uses Render Crack Repair Example 2:

The building below developed cracking around various points on most elevations. The house builder had been involved in numerous difficult conversations with his customer. The contractor was reluctant to undertake the traditional method of removal and re-instatement of the render as he knew there was the probability of further movement within the block creating a re-occurrence of the cracking in the newly applied render.



Example of cracking

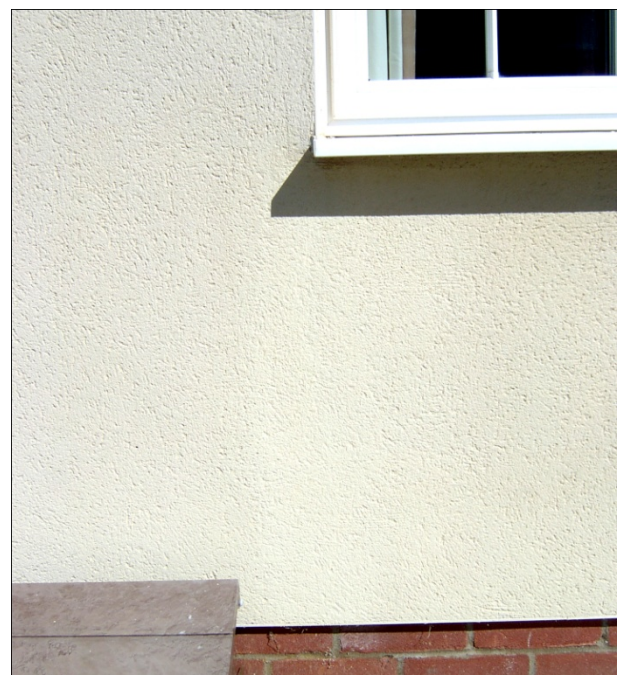
There was also the likelihood of damage to block work behind the render upon its removal, this added to the potential costs of the remedial work required.

The client was becoming unhappy in the process.

It was suggested to the contractor involved he contacts RENDIT, who may have a potential solution.

Our Technician was called to site and a colour match was performed in his mobile laboratory. MENDREND flexible fissure infill and MENDREND were then applied to the areas, using the technique described later in this document.

This, as the pictures show, resulted in a happy client and a problem solved.



After application and repair



Mendrend Fissure Infill - Patent No. 2372253

DESCRIPTION

An aqueous dispersion of acrylic polymers, iron oxide pigments, finely graded aggregates, controlling chemicals, which enables the infill of small defects. It has a rheology that enables the infill of minor defects; following set it retains elasticity permitting further minor movement without the loss of adhesion properties.

It is supplied in flexible 125cc containers, which incorporate a spout that may be adjusted to provide differing thickness of discharge of material.

It is manufactured in a standard range of colours and may further be blended to specific colouration, subject to additional cost, if required.

APPLICATION

Cut spout, in order that ribbon discharge of materials can be obtained.

Apply materials into fissure, avoiding excessive overspill onto the adjacent area.

Remove excess by rubbing with a dry clean cloth or sponge, ensuring that the texture of the surface has not been flatted, and is a good match to the existing surface.

Allow to dry and top up any shrinkage where necessary, repeating the above technique.

Apply Mendrend, as described in pages 2 or 3 to further blend in repair.

COVERAGE

Depends entirely upon the size of fissure and/or defect. 125cc available.



Mendrend Fissure Infill - Patent No. 2372253

DRYING TIME

Two/three hours for minor defect infill, twelve/eighteen hours for 6mm at 15-20C, relative humidity not exceeding 80%.

SHELF LIFE

More than three months in sealed containers. Protect from frost.

CLEANING

Clean all equipment with hot water immediately after use.

HEALTH AND SAFETY DATA

Mendrend Fissure Infill materials are of a very low order of toxicity. However, in common with all acrylic based materials, always use in well ventilated conditions. Remove skin contamination immediately using clean water, irrigate eye splashes with copious quantities of water and seek medical attention if irritation persists.

Keep out of reach of children and avoid run off of spillage into land drains.

Absorb spillage with absorbent and dispose of by landfill non-special waste.



Standard Abridged Application Instructions

Test materials for colour match, on unobtrusive area, prior to any major repair.
Use only on clean dry walls, under dry conditions.

FISSURE INFILL

Cut spout, in order that ribbon discharge of materials can be obtained.

Apply materials onto fissure, avoiding excessive overspill onto the adjacent area.

Remove excess by rubbing with a dry clean cloth or sponge, ensuring that the texture of the surface has not been flatted, and is a good match to the existing surface.

Allow to dry and top up any shrinkage where necessary, repeating the above technique.

Apply Mendrend, as subsequent paragraph to further blend repair, if required.

MENDREND - (DISCOLOURATION REMOVAL LOCALIZED REPAIR)

Using 4" foam roller, apply materials thinly, undiluted onto area of discolouration.

Add water to Mendrend, in roller tray (approx 50/50), lightly apply Mendrend, using 4" foam roller, to immediate adjacent areas, 'feathering' out at edges, to blend in repair, adding water continue 'feathering' out edges until repair is unobtrusive.

Repeat, if required.

If general over-coating is required please see page 3 for instructions.

Do not hesitate to contact our technical department, for further instructions, in the event that materials are to be used for other purposes, etc.